



Design No. V435
BXUV.V435
Fire Resistance Ratings - ANSI/UL 263

[Page Bottom](#)

Design/System/Construction/Assembly Usage Disclaimer

- Authorities Having Jurisdiction should be consulted in all cases as to the particular requirements covering the installation and use of UL Certified products, equipment, system, devices, and materials.
- Authorities Having Jurisdiction should be consulted before construction.
- Fire resistance assemblies and products are developed by the design submitter and have been investigated by UL for compliance with applicable requirements. The published information cannot always address every construction nuance encountered in the field.
- When field issues arise, it is recommended the first contact for assistance be the technical service staff provided by the product manufacturer noted for the design. Users of fire resistance assemblies are advised to consult the general Guide Information for each product category and each group of assemblies. The Guide Information includes specifics concerning alternate materials and alternate methods of construction.
- Only products which bear UL's Mark are considered Certified.

Fire-resistance Ratings - ANSI/UL 263

[See General Information for Fire-resistance Ratings - ANSI/UL 263](#)

Design No. V435

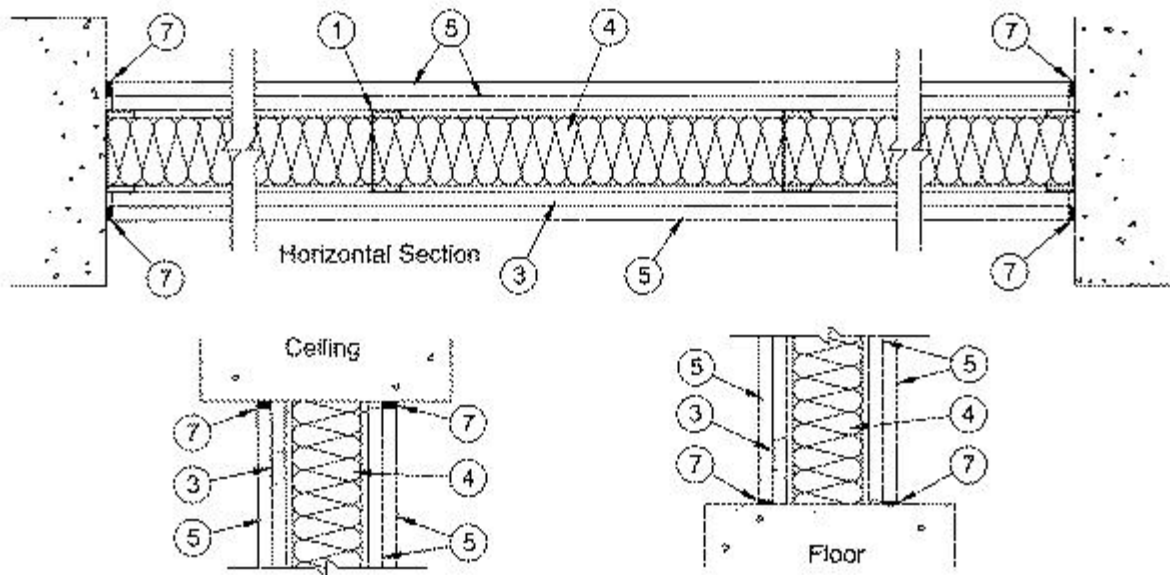
June 06, 2013

Nonbearing Wall Ratings- 1 Hr.

STC Rating-52

L Rating at Ambient- Less than 1 CFM/Lin Ft.

L Rating at 400 F- Less than 1 CFM/Lin Ft.



1. **Studs** — Channel-shaped, min 3-5/8 in. wide by 1-1/4 in. deep with 5/16 in. folded back return flange legs. Fabricated from No. 25 MSG galv steel. Max stud spacing 24 in. OC. Studs to be cut 3/4 in. less than assembly height.

1A. **Framing Members* - Steel Studs** — Not shown - In lieu of Item 1 — For use with Item 2A, proprietary channel shaped steel studs, 1-1/4 in. deep by min 3-5/8 in. wide fabricated from min 0.020 in. thick galv steel. Max stud spacing 24 in. OC. Studs cut 3/4 in. less in length than assembly height.

CALIFORNIA EXPANDED METAL PRODUCTS CO — Viper20™

MARINO/WARE, DIV OF WARE INDUSTRIES INC — Viper20™

PHILLIPS MFG CO L L C — Viper20™

1B. **Framing Members*— Steel Studs** — Not shown - In lieu of Item 1 — For use with Item 2B, channel shaped steel studs, 1-1/4 in. deep by min 3-5/8 in. wide fabricated from min 0.018 in. thick galv steel. Max stud spacing 24 in. OC. Studs cut 3/4 in. less in length than assembly height.

CLARKDIETRICH BUILDING SYSTEMS — CD ProSTUD

DMFCWBS L L C — ProSTUD

MBA BUILDING SUPPLIES — ProSTUD

RAM SALES L L C — Ram ProTRAK

SOUTHEASTERN STUD & COMPONENTS INC — ProSTUD

STEEL STRUCTURAL SYSTEMS L L C — Tri-S ProSTUD

1C. Framing Members* - Steel Studs — Not shown - In lieu of Item 2 — For use with Item 2C, proprietary channel shaped steel studs, min 3-5/8 in. wide. Max stud spacing 24 in. OC. Studs cut 3/4 in. less in length than assembly height.

CALIFORNIA EXPANDED METAL PRODUCTS CO — Viper25™

MARINO/WARE, DIV OF WARE INDUSTRIES INC — Viper25™

PHILLIPS MFG CO L L C — Viper25™

1D. Framing Members* - Steel Studs — Not shown - In lieu of Item 1 — For use with Item 2D, proprietary channel shaped steel studs, 1-1/4 in. deep by min 3-5/8 in. wide fabricated from min 0.020 in. thick galv steel. Max stud spacing 24 in. OC. Studs cut 3/4 in. less in length than assembly height.

TELLING INDUSTRIES L L C — Viper20™

1E. Framing Members*— Steel Studs — Not shown - In lieu of Item 1 — For use with Item 2E, channel shaped steel studs, 1-1/4 in. deep by min 3-5/8 in. wide fabricated from min 0.018 in. thick galv steel. Max stud spacing 24 in. OC. Studs cut 3/4 in. less in length than assembly height.

TELLING INDUSTRIES L L C — TRUE-STUD™

1F. Framing Members* - Steel Studs — Not shown - In lieu of Item 2 — For use with Item 2F, proprietary channel shaped steel studs, min 3-5/8 in. wide. Max stud spacing 24 in. OC. Studs cut 3/4 in. less in length than assembly height.

TELLING INDUSTRIES L L C — Viper25™

2. Floor and Ceiling Runners — (Not Shown) - Channel-shaped runners, 3-5/8 in. wide by 1-1/4 in. deep, fabricated from 25 MSG galv steel. Attached to floor and ceiling with fasteners spaced max 24 in. OC.

2A. Framing Members* - Floor and Ceiling Runners — Not shown - In lieu of Item 2 — For use with Item 1A, proprietary channel shaped runners, 1-1/4 in. deep by min 3-5/8 in. wide fabricated from min 0.020 in. thick galv steel, attached to floor and ceiling with fasteners spaced 24 in. OC max.

CALIFORNIA EXPANDED METAL PRODUCTS CO — Viper20™ Track

MARINO/WARE, DIV OF WARE INDUSTRIES INC — Viper20™ Track

PHILLIPS MFG CO L L C — Viper20™ Track

2B. Framing Members*— Floor and Ceiling Runners — Not shown - In lieu of Item 2 — For use with Item 1B, channel shaped runners, 1-1/4 in. deep by min 3-5/8 in. wide fabricated from min 0.018 in. thick galv steel, attached to floor and ceiling with fasteners spaced 24 in. OC max.

CLARKDIETRICH BUILDING SYSTEMS — CD ProTRAK

DMFCWBS L L C — ProTRAK

MBA BUILDING SUPPLIES — ProTRAK

RAM SALES L L C — Ram ProSTUD

SOUTHEASTERN STUD & COMPONENTS INC — ProTRAK

STEEL STRUCTURAL SYSTEMS L L C — Tri-S ProTRAK

2C. **Framing Members* - Floor and Ceiling Runners** — Not shown - In lieu of Item 1 — For use with Item 1C, proprietary channel shaped runners, min 3-5/8 in. wide, attached to floor and ceiling with fasteners spaced 24 in. OC max.

CALIFORNIA EXPANDED METAL PRODUCTS CO — Viper25™Track

MARINO/WARE, DIV OF WARE INDUSTRIES INC — Viper25™Track

PHILLIPS MFG CO L L C — Viper25™ Track

2D. **Framing Members* - Floor and Ceiling Runners** — Not shown - In lieu of Item 2 — For use with Item 1C, proprietary channel shaped runners, 1-1/4 in. deep by min 3-5/8 in. wide fabricated from min 0.020 in. thick galv steel, attached to floor and ceiling with fasteners spaced 24 in. OC max.

TELLING INDUSTRIES L L C — Viper20™ Track

2E. **Framing Members*— Floor and Ceiling Runners** — Not shown - In lieu of Item 2 — For use with Item 1E, channel shaped runners, 1-1/4 in. deep by min 3-5/8 in. wide fabricated from min 0.018 in. thick galv steel, attached to floor and ceiling with fasteners spaced 24 in. OC max.

TELLING INDUSTRIES L L C — TRUE-TRACK™

2F. **Framing Members* - Floor and Ceiling Runners** — Not shown - In lieu of Item 1 — For use with Item 1F, proprietary channel shaped runners, min 3-5/8 in. wide, attached to floor and ceiling with fasteners spaced 24 in. OC max.

TELLING INDUSTRIES L L C — ViperTrack™

3. **Furring Channel** — Resilient 25 MSG galv steel furring channels installed on one side of wall and spaced vertically max 24 in. OC. Flange portion attached to floor and ceiling with fasteners spaced max 24 in. OC.

4. **Batts and Blankets*** — Min 2.5 pcf density unfaced mineral wool batts supplied in 24 by 48 by 3 in. thick boards installed to completely fill each stud cavity.

See **Batts and Blankets*** (BKNV and/or BZJZ) categories for names of Classified companies.

5. **Gypsum Board*** — Any 5/8 in. thick UL Classified Gypsum Board that is eligible for use in Design Nos. L501, G512 or U305. Nom 5/8 in. thick, 4 ft wide. Screw-attached to resilient furring channels on one side of wall with 1 in. long type S steel screws spaced 12 in. OC. On direct attached side, base layer screw attached to studs with 1in. long type S-12 steel screws spaced 16 in. OC and face layer screw attached to studs with 1-5/8 in. long type S-12 screws spaced 16 in. OC. Gypsum board joints oriented vertically, located over studs and offset between layers. Max gap at perimeter of partition is 3/16 in.

ACADIA DRYWALL SUPPLIES LTD [\(View Classification\)](#) — CKNX.R25370

AMERICAN GYPSUM CO [\(View Classification\)](#) — CKNX.R14196

BEIJING NEW BUILDING MATERIALS PUBLIC LTD CO [\(View Classification\)](#) — CKNX.R19374

CERTAINTED GYPSUM CANADA INC [\(View Classification\)](#) — CKNX.R15187

CERTAINTED GYPSUM INC ([View Classification](#)) — CKNX.R3660

CGC INC ([View Classification](#)) — CKNX.R19751

GEORGIA-PACIFIC GYPSUM L L C ([View Classification](#)) — CKNX.R2717

LAFARGE NORTH AMERICA INC ([View Classification](#)) — CKNX.R18482

LOADMASTER SYSTEMS INC ([View Classification](#)) — CKNX.R11809

NATIONAL GYPSUM CO ([View Classification](#)) — CKNX.R3501

PABCO BUILDING PRODUCTS L L C, DBA PABCO GYPSUM ([View Classification](#)) — CKNX.R7094

PANEL REY S A ([View Classification](#)) — CKNX.R21796

SIAM GYPSUM INDUSTRY (SARABURI) CO LTD ([View Classification](#)) — CKNX.R19262

TEMPLE-INLAND ([View Classification](#)) — CKNX.R6937

THAI GYPSUM PRODUCTS PCL ([View Classification](#)) — CKNX.R27517

UNITED STATES GYPSUM CO ([View Classification](#)) — CKNX.R1319

USG MEXICO S A DE C V ([View Classification](#)) — CKNX.R16089

6. Joint Tape and Compound — (Not Shown) - Vinyl, dry or premixed joint compound, applied to joints and screw heads. Paper tape, 2 in. wide, embedded in first layer of compound over all joints. When used in conjunction with a suspended ceiling, joints and screw heads above ceiling shall be also be finished.

7. Caulking and Sealants* — Nom 5/8 in. depth of sealant applied to fill max 3/16 in. wide gaps around the perimeter on both sides of partition for sound and smoke control. A nominal 1/4 in. diam bead of sealant shall be applied to cover intermittent point contact locations.

SPECIFIED TECHNOLOGIES INC — SpecSeal Smoke "N" Sound Sealant.

*Bearing the UL Classification Mark

[Last Updated](#) on 2013-06-06

[Questions?](#)

[Print this page](#)

[Terms of Use](#)

[Page Top](#)

© 2013 UL LLC

When the UL Leaf Mark is on the product, or when the word "Environment" is included in the UL Mark, please search the [UL Environment database](#) for additional information regarding this product's certification.

The appearance of a company's name or product in this database does not in itself assure that products so identified have been manufactured under UL's Follow-Up Service. Only those products bearing the UL Mark should be considered to be Certified and covered under UL's Follow-Up Service. Always look for the Mark on the product.

UL permits the reproduction of the material contained in the Online Certification Directory subject to the following conditions: 1. The Guide Information, Assemblies, Constructions, Designs, Systems, and/or Certifications (files) must be presented in their entirety and in a non-misleading manner, without any manipulation of the data (or drawings). 2. The statement "Reprinted from the Online Certifications Directory with permission from UL" must appear adjacent to the extracted material. In addition, the reprinted material must include a copyright notice in the following format: "© 2013 UL LLC".